

Aberdeen Village Centre

1395 Hillside Drive, Kamloops, British Columbia

FOR LEASE

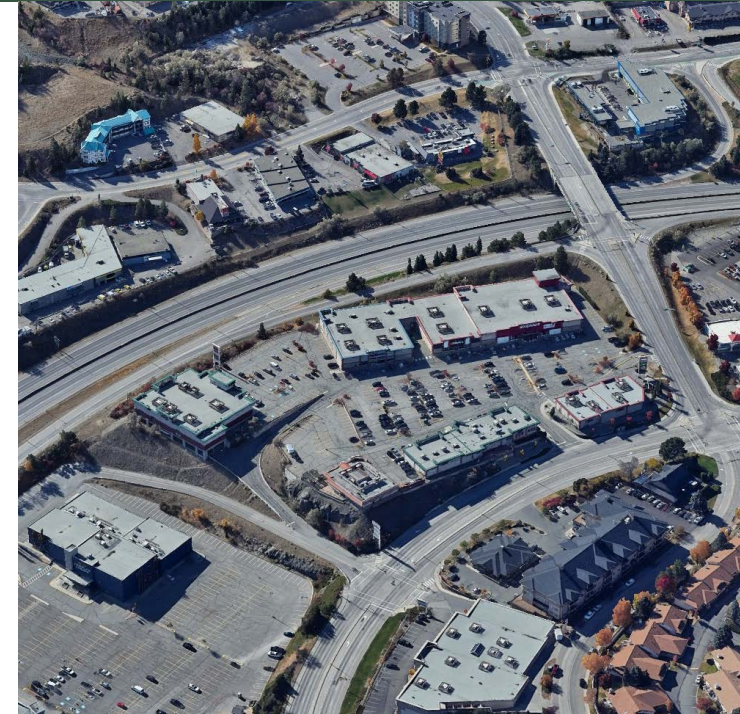
James Boyd
Senior Director, Leasing | Salesperson
jboyd@salthillcapital.com | 437.837.0318



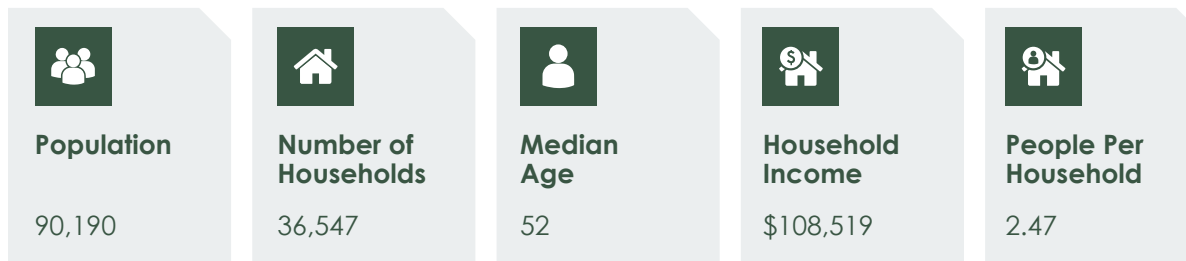
Highlights

Aberdeen Village Centre is a prominent shopping destination located in Kamloops, British Columbia. Strategically situated along the TransCanada Highway, it offers convenient access for both locals and visitors.

- The Centre hosts several major retailers, including Staples, Chapters, and Mark's Work Wearhouse, providing a diverse shopping experience.
- It is adjacent to Aberdeen Mall, the largest regional shopping centre in the area, enhancing its appeal as a shopping hub.
- The Centre's location along the TransCanada Highway at Hillside Drive makes it easily accessible for shoppers traveling by car.



Demographics | 10km Radius



*Data from 2023 Environics Analytics.



Aberdeen Village Centre

1395 Hillside Drive, Kamloops, British Columbia

FOR LEASE

James Boyd
Senior Director, Leasing | Salesperson
jboyd@salthillcapital.com | 437.837.0318



- 0001. Indigo (18,126 Sf)
- 0002. One Boardshop (6,327 sf)
- 0003. Sally Beauty Supply (1,305 sf)
- 0004. Runner's Sole (1,375 sf)
- 0005. Easyfinancial (1,278 sf)
- 0006. Crux Chiropractic (1,268 sf)
- 0007. Arigato Sushi (1,951 sf)
- 0008. Swiss Chalet (6,214 sf)
- 0009. Suzannes (2,400 sf)
- 0009a. Oxygen Yoga & Fitness Kamloops (1,554 sf)
- 0010. Moores Clothing For Men (5,582 sf)
- 0011. Staples Business Depot (26,221 sf)
- 0012. Mark's Work Warehouse (12,473 sf)
- 0013. Petsmart (17,951sf)